



Genuine

NEWSTAR™

2011 CHASSIS CATALOG



DISCLAIMER

OUR CHASSIS CATALOG PROVIDES INFORMATION ON VARIOUS REPLACEMENT COMPONENTS OFFERED BY S&S TRUCK PARTS, INC. WE HAVE EXTENSIVELY EXAMINED THE MATERIAL PROVIDED TO ASSURE ACCURACY AND RELIABILITY. HOWEVER, THIS INFORMATION SHOULD ONLY BE USED TO ASSIST THE USER IN IDENTIFYING THE PRODUCT WE ARE OFFERING AS A REPLACEMENT.

TRADEMARK ACKNOWLEDGEMENTS

S&S TRUCK PARTS, INC. / NEWSTAR USE OF THE NAMES OF ORIGINAL MANUFACTURERS, THEIR MODELS, TYPES, PART NUMBERS AND OTHER DESCRIPTIVE PRODUCT INFORMATION IS ONLY FOR THE PURPOSE OF AIDING CUSTOMERS IN CROSS-REFERENCING TO THE APPROPRIATE S&S/ NEWSTAR PART. THE FOLLOWING IS A LISTING, COMPILED TO THE BEST OF OUR KNOWLEDGE, OF TRADEMARKS USED IN THIS CATALOG FOR THE AFOREMENTIONED PURPOSE.

ARVIN MERITOR IS A TRADEMARK OF MERITOR TECHNOLOGY, INC.
BWP IS A TRADEMARK OF BORG WARNER CORP
DANA[®] IS A TRADEMARK OF DANA CORP.
DAYTON IS A BRAND OF DAYTON PARTS, LLC
FLAGG IS A TRADEMARK OF TRIANGLE SPRING CORP.
FORD IS A TRADEMARK OF FORD MOTOR CO.
FREIGHTLINER IS A TRADEMARK OF FREIGHTLINER CORP.
GMC IS A TRADEMARK OF GENERAL MOTORS CORP.
INTERNATIONAL TRUCK IS A TRADEMARK OF NAVISTAR INTERNATIONAL CORP.
MACK IS A TRADEMARK OF MACK TRUCKS, INC.
PAI / EXCEL IS A TRADEMARK OF PAI INDUSTRIES
PETERBILT IS A TRADEMARK OF PACCAR, INC.
TRW IS A TRADEMARK OF TRW AUTOMOTIVE
VOLVO IS A TRADEMARK OF VOLVO GROUP
WHITE IS A TRADEMARK OF VOLVO GROUP

KING PIN KITS	1-6
TIE ROD ENDS	7-10
DRAG LINKS	11-12
FRONT and REAR SUSPENSION PARTS	
FOR PETERBILT, KENWORTH	
and FREIGHTLINER APPLICATIONS	12
SUSPENSION PARTS	
FOR INTERNATIONAL TRUCK APPLICATIONS	13
TORQUE ROD ASSEMBLIES	
FOR VARIOUS APPLICATIONS	14
FRONT and REAR SPRING PARTS	
FOR FORD / STERLING APPLICATIONS	14
FRAME BOLTS & LOCKNUTS	
FOR VARIOUS APPLICATIONS	15
U-BOLTS	
FOR INTERNATIONAL TRUCK	
AND FREIGHTLINER APPLICATIONS	15
FRONT and REAR SUSPENSION PARTS	
FOR MACK APPLICATIONS	16

OUR QUALITY CONTROL LABORATORY



COORDINATE MEASURING MACHINE (CMM)

FOR CHECKING LENGTHS, LOCATIONS, CONCENTRICITY OF DIAMETERS, FLATNESS AND MORE.



CNC OPTICAL COMPARATOR

FOR VISUAL CHECKS OF FORMS, RADIUS, LENGTHS, HEIGHTS AND MORE.



MITUTOYO HR-500 ROCKWELL HARDNESS

MEASURES ROCKWELL HARDNESS OF VARIOUS METALS AND OTHER MATERIALS IN THIRTY DIFFERENT HARDNESS SCALES.



S & S TRUCK PARTS, INC. HAS EXCLUSIVE CONTRACTS WITH STATE-OF-THE-ART FACTORIES THROUGHOUT NORTH AMERICA AND EUROPE FOR THE MANUFACTURE OF **NEWSTAR** COMPONENTS. S & S PROVIDES IT CUSTOMERS WITH GUARANTEED QUALITY PARTS. OUR COMMITMENT TO QUALITY EXTENDS FROM OUR MANUFACTURING PROCESS TO OUR QUALITY CONTROL LABORATORY (QCL). THE QCL LOCATED AT OUR HEADQUARTERS IN SCHAUMBURG, ILLINOIS CONTAINS THE MOST ADVANCED AND SOPHISTICATED QUALITY INSPECTION EQUIPMENT AVAILABLE. SUBSTANTIAL INVESTMENTS MADE IN THIS EQUIPMENT ENSURE THAT **NEWSTAR** COMPONENTS MEET THE INDUSTRY'S MOST STRINGENT QUALITY STANDARDS.

NEWSTAR™ CHASSIS COMPONENTRY



**KING PIN KITS
MADE IN U.S.A.
OEM APPROVED
GENUINE TIMKEN BEARINGS**

NEWSTAR Number	King Pin Size	----- Replacement for -----				
		TRW Auto Number	Arvin Meritor Number	Euclid Number	Dayton Number	OEM Number
S-4996	1.234"x7.66"	K401N	R200003 Bronze	E4431B	300-110	61556R91 FAK 4446
IHC Axle Model: FA65,80,89,91,97,98,99 Single Drawkey						
S-5014	1.1095"x6.25"	K431	R200007 Bronze	E4432B	300-118	69971R91 FAK 4450
IHC Axle Model: FA12,20,28,30,40,41,48 Single Drawkey						
S-5015	1.2335"x6.75"	K432	R200008 Bronze	E4433B	300-120	70594R91 FAK 4451
IHC Axle Model: FA60,68,69,70,72,48 Single Drawkey						
S-6492	1.234"x7.44"	K477	R200143 Bronze	E4438B	300-140	B7TZ3111F FAK 4532
Ford Axle Model: 6000,7000Lb						
S-7190	1.811"x10.78"	K479	R200017 Bronze	E4598B	300-142	WH 216446
Volvo / White Axle Model: F120,F3-120,F3W-120,F5-120,F5W-120,F6W-120,F5-140,F5W-140						
S-6939	Tapered Bolt 9.75" Long	K489	R200123 Nylon (ROR 123)	E4434N	300-150	FAK 4549 FAK 4527 B7TZ3111C 2264897 C2TZ3111D
Meritor Axle Model: FE-900-910						
S-6938	1.433"x8.50"	K496B	R200142 Bronze (ROR 142)	E4441B	300-159	FAK 4548 FAK 4531 D1HZ3111A 303136C91
Meritor Axle Model: FD-900,901,902,903,FD-208,209						
S-6944	1.7935"x9.12"	K504	R200167 Nylon (ROR 167)	E4442N	300-171	FAK 4540 C3TZ3111B 2492007
Meritor Axle Model: FD-211,215,216,218						

• LATEST ADDITIONS TO OUR CATALOG

ALL PARTS SUPPLIED ARE S&S/NEWSTAR. USE OF OTHER MANUFACTURERS' NAMES, PART NUMBERS, OR TRADEMARKS ARE FOR INFORMATIONAL AND IDENTIFICATION PURPOSES ONLY.

**KING PIN KITS
MADE IN U.S.A. OEM APPROVED
GENUINE TIMKEN BEARINGS**

NEWSTAR Number	King Pin Size	----- Replacement for -----				
		TRW Auto Number	Arvin Meritor Number	Euclid Number	Dayton Number	OEM Number
S-6947	1.7935"x9.12"	K510B	R200172 Bronze (ROR 172)	E4442B	300-182	FAK 4551 FAK 4544 D1HZ3111B 15512235 303139C91
Meritor Axle Model: FA-211,215,216,218						
S-5132	1.6085"x9.61"	K517	R200178 R200032 Bronze (ROR 178) R200178	E4447B	300-188	306921C93 FAK 4547 FAK 4475 15512237
Meritor Axle Model: FA119 Double Drawkey						
S-6663	1.484"x8.85"	K524B	R200034 Bronze	E4448B	300-194	408547C93 FAK 4477 591945C92
IHC Axle Model: FA109 Double Drawkey						
S-6943	1.6065"x8.74"	K526B	R200157 Bronze (ROR 157)	E4449B	300-195	FAK 4550 FAK 4539 15512233 D0HZ3111C C4TZ3111B 303138C92
Meritor Axle Model: FE-970						
S-6942	1.6065"x8.74"	K526D	R200156 Nylon (ROR 156)	E4449N	300-196	FAK 4538 2442145 D0HZ3111C C4TZ3111A
Meritor Axle Model: FE-970						
S-6950	1.794"x10.41"	K534B	R200199 Bronze (ROR 199) R200193	E4450B	300-204	FAK 4559 FAK 4553 694332 452344C91
Meritor Axle Model: FF-921						
S-7801	1.609"x9.66"	K535B (K572B)	R200074 Bronze	E4451B	300-205 300-249	588808C91 FAK 4517 343KK105
IHC Axle Model: FA118,127,139,309,329,339,342,401 Double Drawkey						
S-7463	1.609"x9.66"	K535D	R200042 Nylon	E4451N	300-206	FAK 4485 399942C93
IHC Axle Model: FA118,127,139,309,329,339,342,401 Double Drawkey						
S-6504	1.433"x8.25"	K538B	R200044 Bronze	E4452B	300-207	D6TZ3111A
Ford Axle Model: 7000,7500,9000 Lb						
S-3682	1.179"x6.36"	K539D	R200045 Nylon	E4453N	300-208	722166
GMC Axle Model: F050						
S-9722	1.179" x6.36"	K540B	R200046 Bronze	E4453B	300-209	722166B
GMC Axle Model: F050						

**KING PIN KITS
MADE IN U.S.A. OEM APPROVED
GENUINE TIMKEN BEARINGS**

NEWSTAR Number	King Pin Size	----- Replacement for -----				
		TRW Auto Number	Arvin Meritor Number	Euclid Number	Dayton Number	OEM Number
S-6946	1.99" x11.04"	K541B	R200170 Bronze (ROR 170)	E4454B	300-210	FAK 4571 FAK 4542 DOHZ3111E 301-SQ-44 15512234 303140C92
Meritor Axle Model: FL-901,FH-901						
S-6945	1.99"x11.04"	K542D	R200168 Nylon (ROR 168)	E4454N	300-211	FAK 4541 DOHZ3111E 2457865
Meritor Axle Model: FL-901,FH-901						
S-6503	1.607"x9.08"	K546B	R200050 Bronze	E4457B	300-215	D6HZ3111B
Ford Axle Model: 9000 Lb						
S-6949	1.999"x11.21"	K547B	R200198 Bronze (ROR 198)	E4458B	300-216	FAK 4558 D5HZ3111C 15585841 474520C91 597258C91
Meritor Axle Model: FL-931						
S-6502	1.794"x10.07"	K548B	R200051 Bronze	E4459B	300-217	D6HZ3111A
Ford Axle Model: 12000 Lb						
S-5223	1.359"x7.97"	K549B	R200052 Bronze	E4460B	300-218	473695C91 1648204C91 FAK 5444 FAK 5452 101KK109 101KK110
IHC Axle Model: FA71,73,74,101,103,104 Single Drawkey						
S-3596	1.484"x8.85"	K551B	R200054 Bronze	E4461B	300-220	493092C92 FAK 4497
IHC Axle Model: FA109 Single Drawkey						
S-4948	1.6085"x9.66"	K552B	R200055 Bronze	E4462B	300-221	493094C95 FAK 4496 FAK 4498 FAK 5445 FAK 5446 337KK104 337KK101
IHC Axle Model: FA118,127,139,329,339 Single Drawkey						
S-4949	1.6085"x9.16"	K554B	R200057 Bronze	E4463B	300-223	493095C91 FAK 4500 FAK 5447 FAK 5448 337KK100
IHC Axle Model: FA309 Single Drawkey						
S-6072	Tapered Bolt 7.47" Long	K562B	R200065 Bronze	E4467B	300-231	301SQ47CP1
Mack Axle Model: FA532,FA(W)536,FA(W)537						
S-6948	1.7935"x10.39"	K563B	R200195 Bronze (ROR 195)	E4468B	300-232	FAK 4555 2010021 549800C91
Meritor Axle Model: FF-931						

• LATEST ADDITIONS TO OUR CATALOG

ALL PARTS SUPPLIED ARE S&S/NEWSTAR. USE OF OTHER MANUFACTURERS' NAMES, PART NUMBERS, OR TRADEMARKS ARE FOR INFORMATIONAL AND IDENTIFICATION PURPOSES ONLY.

**KING PIN KITS
MADE IN U.S.A. OEM APPROVED
GENUINE TIMKEN BEARINGS**

NEWSTAR Number	King Pin Size	----- Replacement for -----				
		TRW Auto Number	Arvin Meritor Number	Euclid Number	Dayton Number	OEM Number
S-14695	1.811"x10.53"	K564B	R200067 Bronze	E4470B	300-235	WH 217175
Volvo / White Axle Model: F6W-1200 After 1990						
S-7191	1.811"x10.53"	K565B	R200068 Bronze	E4471B	300-234	WH 37090-5005
Volvo / White Axle Model: F6W-1200 Before 1990						
S-6643	1.745"x9.38"	K567B	R200066 Bronze	E4469B	300-233	8885621 8885856
GMC Axle Model: F120,D						
S-6963	1.6065" x9.38"	K570B	R201300 Bronze (ROR 1300)	E4595B	300-240	FAK 4560
Meritor Axle Model: FF-971						
S-5134	1.6085"x9.16"	K571B	R200073 Bronze	E4697B	300-248	586806C91 FAK 4516 FAK 5451 309KK102
IHC Axle Model: FA309 Double Drawkey						
S-6073	Tapered Bolt 8.75" Long	K574B	R200071 Bronze	E4599B	300-245	301SQ52
Mack Axle Model: FA(W)616,617						
S-6964	1.7935"x10.392"	K576C	R201307 E-Z Steer (ROR 1307)	E4694C	300-242	FAK 4564 15510849
Meritor Axle Model: FF931,932,933,934,941,942,943,944						
S-8678	1.7935"x10.392"	K582	R201315 E-Z Steer (ROR 1315)	E6199C	300-266	FAK4570 TDAR201315
Meritor Axle Model: FO,FF961						
S-6965	1.7935"x10.392"	K583	R201309 E-Z Steer (ROR 1309)	E4695C	300-244	15618118 FAK 4566
Meritor Axle Model: FF941,952,FG931,933,943,952,17100,17101						
S-6485	1.625"x9.20"	K584	R200267 E-Z Steer	E4696C	300-257	806355 FAK 4572 1008431 ETN806355
Dana® / Eaton Axle Model: EFA12F4						
S-8529	1.99"x11.212"	K585	R201312 E-Z Steer (ROR 1312)	E4458C	300-265	FAK 4568
Meritor Axle Model: FL931,941,943,951						
S-6486	1.625"x9.195"	K586	R200251 E-Z Steer	E6869C	300-258	806356 FAK 4573
Dana® / Eaton Axle Model: EFA12F3 and 13F3						
S-9365	1.872"x9.97"	K591	R200250 E-Z Steer	E6194C	300-267 300-326	811525 1008500
Dana® / Eaton Axle Model: EFA22T2/22T5 22LB AXLE						
S-F187	1.872"x9.97"	K591B	Bronze	E6194B	300-283	811525B
Dana® / Eaton Axle Model: EFA22TA / 22T5 22MLB Axle						
S-9304	1.359"x7.97"	K592	R200268 Bronze	E6198B	300-268	FAK 4582 1660271C91
IHC Axle Model: I60,80 Double Drawkey						

**KING PIN KITS
MADE IN U.S.A. OEM APPROVED
GENUINE TIMKEN BEARINGS**

NEWSTAR Number	King Pin Size	----- Replacement for -----				
		TRW Auto Number	Arvin Meritor Number	Euclid Number	Dayton Number	OEM Number
S-15614	1.7935"x10.392"	K593	R201505 Bronze	E6199B	300-284	1315B
Meritor Axle Model: F0,FF961						
S-4988	1.609"x9.66"	K594	R200278 E-Z Steer	E6875C	300-269	1658934C91 FAK 5453 343KK103
IHC Axle Model: FA118,127,139,309,339,342,401 Double Drawkey						
S-A811	1.921" x9.87"	K602	R201426 Bronze	E9941B	300-276	FAK 4601
IHC Axle Model: I100S, I120S						
S-A483	1.92"x9.87"	K602C	E-Z Steer	-----	300-271	FAK 5455 1668411C92 120KK100
Axle Model: IHC I100S,I120S Non-Driving Axles/Garlock Bushing						
S-13563	2.046"x10.12"	K603	Bronze R201427	E9942B	300-277	1668412C91
Axle Model: IHC I140S						
S-A484	2.05"x10.12	K603C	E-Z Steer	E9942C	300-272	FAK 5456 140KK100 1668412C92
Axle Model: IHC I140S. Non-Driving Axle						
S-8371	1.625"x9.20"	K609	R200269 Bronze	E4696B	300-274	806355B FAK 4583
Dana® / Eaton Axle Model: EFA12F4						
S-F091	1.3125"x8.040"	K618C	Bronze	E10104B	300-287	12540328
GMC Truck Kodiak, Top Kick						
S-F092	1.892"x9.203"	K619C	Bronze	E10105B	300-288	12540329
GMC Truck Top Kick						
S-D819	1.892"x9.604"	K620C	Bronze	E10106B	300-289	12540330
GMC Truck 5500, 6500, 7500						
S-18334	2.046"x11.00"	K627C	Bronze	E11785B	300-278	FAK5457 220-KK-100 1685405C91
Dana® / Eaton Axle Model: I160S, 180S, 200S						
S-C464	1.794"x9.05"	K628	E-Z Steer	E11297	300-293	823078 328344
Dana® / Eaton Axle Model: E1000I, 1200I						
S-D562	1.794"x9.05"	-----	R200281 Bronze	E11394B	300-297	823078B FAK 4610
Dana® / Eaton Axle Model: E1000I, 1200I						
S-C119	1.793"x8.844"	-----	E-Z STEER R201419 ROR 1419	E11808C	300-299	2500542C91
Meritor Axle Model: FF981, 982, 986						

**KING PIN KITS
MADE IN U.S.A. OEM APPROVED
GENUINE TIMKEN BEARINGS**

NEWSTAR Number	King Pin Size	----- Replacement for -----				
		TRW Auto Number	Arvin Meritor Number	Euclid Number	Dayton Number	OEM Number
S-14680	1.793"x8.844"	-----	Bronze R201419B	-----	300-317	-----
Meritor Axle Model: FF981, 982, 986						
S-13973	1.8725"x9.970"	-----	-----	E10107B	-----	329433
Axle Model: EFA-20F4, 22T2, 22T5, 24T2, 24T5 Made after Jan 1, 2000 with Bi-Metal Bushing						
S-13974	1.8725"x9.970"	-----	-----	-----	-----	329432
Axle Model: EFA-20F4, 22T2, 22T5, 24T2, 24T5 Made after Jan 1, 2000 with Composite Bushing						
S-13975	1.8725"x9.065"	-----	-----	-----	300-307	328343
Axle Model: E-1460I/W Made after Jan 1, 2000 with Bi-Metal Bushing						
S-13976	1.8725"x9.065"	K630C	-----	-----	300-308 300-295	328345
Axle Model: E-1460I/W Made after Jan 1, 2000 with Composite Bushing						
S-13979	1.8725"x9.970"	-----	-----	-----	300-325	329434
Axle Model: EFA-18F3, 20F4, 22T2, 22T5, 24T2, 24T5 Made after Jan 1, 2000 with Bi-Metal Bushing						
S-13980	1.7925"x9.080"	-----	-----	-----	300-303	328346
Axle Model: 1203I with Bi-Metal Bushing						
S-13981	1.7925"x9.080"	-----	-----	-----	300-304	328348
Axle Model: 1203I with Composite Bushing						
S-13982	1.8725"x9.065"	-----	-----	-----	300-305	328347
Axle Model: 1002I, 1002W, 1202I, 1202W, 1322I, 1322W, 1462I, 1462W with Bi-Metal Bushing						
S-13983	1.8725"x9.065"	-----	-----	-----	300-306	328349
Axle Model: 1002I, 1002W, 1202I, 1202W, 1322I, 1322W, 1462I, 1462W with Composite Bushing						
S-11612	1.234"x7.438"	-----	R201314	-----	300-296	FAK4569
Axle Model: FC921						
S-8513	1.7935"x10.392"	-----	R201310 Bronze (ROR 1310)	E6868B	300-264	FAK 4567
Meritor Axle Model: FG931						
S-17617	1.999"x11.212"	-----	R201476	E11814C	-----	-----
Meritor Axle Model: MFS16-18-20						

NEWSTAR™ CHASSIS COMPONENTRY

TIE ROD ENDS OEM APPROVED



NEWSTAR Number	Stud Center To End	----- Replacement for -----				
		TRW Auto Number	Arvin Meritor Number	Euclid Number	Dayton Number	OEM Number
S-5056	4.88"	ES187L	R230060 Roadside A3144Q225 A23144K193	E4610	310-121	C1TZ3A131C 110362R91 FTR187L 10QH243P2 10QH248P2 2456810 10QH248P2
Meritor Axle Model: FD,FE,FG900						
S-5057	4.88"	ES187R	R230061 Curbside A3144R226 A23144J192	E4611	310-122	C8TZ3A130A 110363R91 FTR187R 10QH242P1 10QH248 2456811
Meritor Axle Model: FD,FE,FG900						
S-12090	3.88"	ES235L	R230006	E4600	310-129	127241R91 263498C91
Meritor Axle Model: 5000LB Axle (FA68 & FA72) & 5500LB Axle (FA89)						
S-12091	3.88"	ES235R	R230007	E4601	310-130	127242R91 263499C91
Meritor Axle Model: 5000LB Axle (FA68 & FA72) & 5500LB Axle (FA89)						
S-4767	4.43"	ES373R	R230019 Curbside	E4605	310-184	C7TZ3A131D 450062C91 FTR373R 1660272C92
IHC Axle Model: FA71,73,74,101,104,103						
S-16146	4.00"	ES323R	R230404 Curbside	---	310-155	D0HZ-3A130-A
IHC Axle Model: Ford 900,9000						
S-16147	4.00"	ES323L	R230403 Roadside	---	310-154	D0HZ-3A131-A
IHC Axle Model: Ford 900,9000						
S-4768	4.43"	ES373L	R230018 Roadside	E4604	310-183	C7TZ3A130D 450063C91 FTR373L 1660273C92
IHC Axle Model: FA71,73,74,101,104,103						
S-7459	9.18"	ES411L	R230028 Roadside	E4630	310-215	507835C91 1649637C91 FTR411L
IHC Axle Model: FA109,118,127,139,309,329,337,339,340,341,342						
S-7460	9.18"	ES411R	R230029 Curbside	E4631	310-216	507836C91 1649638C91 FTR411R
IHC Axle Model: FA109,118,127,139,309,329,337,339,340,341,342						
S-7358	5.44"	ES423L	R230068 Roadside A3144E525 A3144N456	E4614	310-222	507837C91 FTR423L E3HZ3A131A E4HZ3A131A 1006148 15515804
Meritor Axle Model: FF921,931,932,941,FA109,139,309,329,339						

• LATEST ADDITIONS TO OUR CATALOG

ALL PARTS SUPPLIED ARE S&S/NEWSTAR. USE OF OTHER MANUFACTURERS' NAMES, PART NUMBERS, OR TRADEMARKS ARE FOR INFORMATIONAL AND IDENTIFICATION PURPOSES ONLY.



NEWSTAR™ CHASSIS COMPONENTRY

TIE ROD ENDS OEM APPROVED

NEWSTAR Number	Stud Center To End	----- Replacement for -----				
		TRW Auto Number	Arvin Meritor Number	Euclid Number	Dayton Number	OEM Number
S-7357	5.44"	ES423R	R230069 Curbside A3144D524 A3144P458	E4615	310-223	507838C91 FTR423R E3HZ3A130A E4HZ3A130A 1006149 15515805
Meritor Axle Model: FF921,931,932,941,FA109,139,309,329,339						
S-5048	5.75"	ES431L (ES2116L)	R230071 Roadside A3144K297	E4616	310-229	969055R91 FTR 431L D0HZ3A131B 10QH310P1 18-QK-28-A 10QH248P4 15584419
Meritor Axle Model: FH901,FL901						
S-5049	5.75"	ES431R (ES2114R) (ES2115R)	R230070 Curbside A3144J296 R230023	E4617	310-228	969056R91 FTR 431R D0HZ3A130B 10QH39P1 18QK23A 15584420 18QK29301 10QH248P3 18QK214P2
Meritor Axle Model: FH901,FL901						
S-8634	4.88"	ES2069R ES405R	R230036 Curbside	E4609	310-277	2037140 FTR 2069R
GMC Axle Model: F090,120,D,9M Lb. Capacity						
S-8635	4.88"	ES2070L (ES405L)	R230037 Roadside	E4608	310-278	2037142 FTR 2070L
GMC Axle Model: F090,120,D,9M Lb. Capacity						
S-7688	5.37"	ES2077R	R230044 Curbside	E6775	310-299	E0TZ3A131C
Ford Axle Model: 1/2 Ton-4WD, Ton-2WD						
S-6659	7.37"	ES2090L ES3033L	R230072 Roadside A3144G449 A3144U437 A3144A547	E4628	310-283 310-433	486354C91 590583C91 FTR 2090L FTR 3033L 820694 10-QH-312 10-QH-248P6 798204 820626
Meritor Axle Model: FL941,931,FH901						
S-5988	7.37"	ES2091R (ES2204R) ES3034R	R230073 Curbside A3144F448 A3144V438 A3144Z546	E4629	310-284 310-434	486355C91 506684C91 590584C91 FTR 2091R FTR 2204R FTR 3034R 820695 10-QH-311 10-QH-248P5 581063C91 798203 820627 442354C92 FTR 2202R FTR 3302R
Meritor Axle Model: FL941.931,FH901						
S-8160	5.39"	ES2212R	R230238 Curbside	E6776	310-355	E9TZ3A131F
Ford Axle Model: F350-2WD 86 & UP						





NEWSTAR Number	Stud Center To End	----- Replacement for -----				
		TRW Auto Number	Arvin Meritor Number	Euclid Number	Dayton Number	OEM Number
S-C014	5.75"	ES2224L	R230040 Roadside	E5391	310-326	WH 027090962
Volvo / White Truck Model: XPEDITOR						
S-C015	5.75"	ES2225R	R230056 Curbside	E5402	310-327	WH 027092963
Volvo / White Truck Model: XPEDITOR						
S-B230	12.69"	ES3030R	R230104 Curbside A3144D550	E6856	310-395	FTR 3030RA 1668480C91
Meritor Axle Model: FA231 W/CAST WHEELS						
S-B231	12.69"	ES3031L	R230105 Roadside A3144D549	E6857	310-396	FTR 3031LA 1668479C91
Meritor Axle Model: FA231 W/CAST WHEELS						
S-F505	10.84"	ES3086L	R230217 Roadside	E6135	310-350	1658946C91
Axle Model: IHC S-Series for dropped I-Beam						
S-F506	10.84"	ES3087R	R230218 Curbside	E6136	310-351	1658947C91
Axle Model: IHC S-Series for dropped I-Beam						
S-D898	6"	ES3176R	R230408 Curbside	E9963	310-472	F1HZ3A130A F3HZ3A130B
Ford Axle Model: 10000 LB, 12000 LB						
S-D899	6"	ES3177R	R230409 Roadside	E9962	310-471	F1HZ3A131A F3HZ3A131B
Ford Axle Model: 10000 LB, 12000 LB						
S-A764	11.89"	ES3204L	R230558 Roadside	E10148	310-437	1668224C91 080-TR-116 FTR 8224
IHC Axle Model: 160S,180S						
S-A765	11.89"	ES3205R	R230559 Curbside	E10149	310-438	1668225C91 080-TR-117 FTR 8225
IHC Axle Model: 160S,180S						
S-D639	5.44"	ES3217L	R230413 Roadside	E9949	-----	FTR8407 1668407C91 140TR109
Axle Model: IHC I40S						
S-D640	5.44"	ES3218R	R230414 Curbside	E9950	-----	FTR8408 1668408C91 140TR110
Axle Model: IHC I40S						
S-B599	9.43"	ES3219L	R230415 Roadside	E9951	-----	1668409C91 FTR 8409 140TR111
IHC Axle Model: I120S, 140S						
S-B600	9.43"	ES3220R	R230416 Curbside	E9952	-----	1668410C91 FTR 8410 140TR112
IHC Axle Model: I120S, 140S						
S-F250	5.44"	ES3270L	R230143 Roadside	E10110	310-469	12548110
Axle Model: GMC Kodiak, Topkick 8M LBs						
S-F251	5.44"	ES3271R	R230144 Curbside	E10111	310-470	12548111
Axle Model: GMC Kodiak, Topkick 8M LBs						



NEWSTAR™ CHASSIS COMPONENTRY

TIE ROD ENDS OEM APPROVED

NEWSTAR Number	Stud Center To End	----- Replacement for -----				
		TRW Auto Number	Arvin Meritor Number	Euclid Number	Dayton Number	OEM Number
S-F248	5.44"	ES3274L	R230141 Roadside	E10108	310-467	15619286 12548107
Axle Model: GMC Kodiak 14M LBs						
S-F249	5.44"	ES3275R	R230142 Curbside	E10109	310-468	12548108
Axle Model: GMC Kodiak 14M LBs						
S-9000	8.12"	ES3297R	R230247 Curbside	E8758	310-286	1009010
Eaton / Dana® Axle Model: EFA12F4						
S-8999	8.12"	ES3298L	R230246 Roadside	E8757	310-285	1009009
Eaton / Dana® Axle Model: EFA12F4						
S-F305	7.38"	ES3442R	R230145 Curbside	E11788	310-483	F6HZ3A130AA
Axle Model: Ford Aeromax & Louisville						
S-F306	7.38"	ES3443L	R230146 Roadside	E11789	310-484	F6HZ3A131AA
Axle Model: Ford Aeromax & Louisville						
S-E395	6"	ES3476	R230139 Curbside	E10137	310-455	817019 FTR3476
Dana® / Eaton Axle Model: E10001, E12001, E13201						
S-E394	6"	ES3477	R230140 Curbside	E10138	310-456	817018 FTR3477
Dana® / Eaton Axle Model: E10001, E12001, E13201						
S-18491	10.32"	ES9137L	R230137 Roadside	-----	310-591	ABPP6073380810
Hendrickson Axle Model: MFS6,7,8						
S-18490	10.32"	ES9138R	R230138 Roadside	-----	310-592	ABPP6073382210
Hendrickson Axle Model: MFS6,7,8						
S-9488	6.12"	-----	R230098 Curbside A3144V516	-----	-----	-----
Meritor Axle Model: FU Series						
S-9489	6.12"	-----	R230099 Roadside A3144V517	-----	-----	-----
Meritor Axle Model: FU Series						



NEWSTAR™ CHASSIS COMPONENTRY

DRAG LINKS OEM APPROVED



NEWSTAR Number	Truck / Axle Model / Length	----- Replacement for -----				
		TRW Auto Number	Arvin Meritor Number	Euclid Number	Dayton Number	OEM Number
S-8292	FORD 500,60 Length: Stud Center-Stud Center: 16.64"	DS800	R250012	E5310	346-142	C7TZ3304A
S-4382	FORD 7M,9M,12M,16M Length: Stud Center-Stud Center: 18.03"	DS908	R250025	E5325	346-189	E3HZ3304H E4HZ3304B F5HZ3304YA FDL908
S-8154	FORD E250,350,80-88 Van Length: Stud Center-Stud Center: 18.14"	DS918	R250083	E6685	346-196	D7UZ3A130A
S-4707	IHC FA101,98 Length: Stud Center-Stud Center: 14.75"	DS970	R250044	E5358	346-240	400745C92 FDL970A
S-A828	IHC S-SERIES,W/BUS Length: Stud Center-Stud Center: 18.14"	DS979	R250051	E5366	346-249	FDL979A
S-16393	IHC 9300, 9400 Length: Stud Center-Stud Center: 16.26"	DS1020	R250063	E5386	346-279	503523C94 1658897C92
S-4603	IHC FA71,73,101,104 Length: Stud Center-Stud Center: 16.84"	DS1034	R250066	E5390	346-293	489023C91 FDL 1034
S-E393	PETERBILT 200, 300 SERIES Length: Stud Center-Stud Center: 14.21"	DS1179 L24KT0026	R250067	E6818	346-370	10-02498 J20-6005
S-17648	PETERBILT CONVENTIAL & LOW CAB Length: Stud Center-Stud Center: 31.69"	DS1180	R250068	E6819	346-371	10-02499
S-17354	KENWORTH T400,450,600 Length: Stud Center-Stud Center: 28.28"	DS1186	R250088	E6825	346-377	K162-587 L24VU8088B11
S-A719	IHC H.D. S-SERIES, COF5870 8000 AFTER '89' Length: Stud Center-Stud Center: 17.68"	DS1214	R250112	E9911	346-384	FDL1214A 1661437C91
S-C618	IHC 1652, 7100 SERIES Length: Stud Center-Stud Center: 17.47"	DS1215	R250113	E11463	346-385	1661867C91
S-13415	Freightliner FLD Length: Center to Center 28.87"	DS1218	R250120	E9897	346-386	14-12098-001
S-13715	Freightliner FLD Length: Center to Center 18.83"	DS1220	R250122	E9891	346-388	14-10281-000
S-13716	Freightliner FLD Length: Center to Center 32.03"	DS1275	---	E9901	346-420	14-12098-005
S-13717	Freightliner FLD Length: Center to Center 29.44"	DS1276	---	E9903	346-421	14-12349-000
S-18039	KENWORTH TRUCK MODEL Length: Stud Center-Stud Center: 15.25"	DS1280	---	---	346-520	L24V48036A12
S-C367	9670 SERIES IH TRUCKS Length: Stud Center-Stud Center: 33.88"	DS1293	R250367	E9910	---	1695714C91 1660439C91

• LATEST ADDITIONS TO OUR CATALOG

ALL PARTS SUPPLIED ARE S&S/NEWSTAR. USE OF OTHER MANUFACTURERS' NAMES, PART NUMBERS, OR TRADEMARKS ARE FOR INFORMATIONAL AND IDENTIFICATION PURPOSES ONLY.

NEWSTAR™ CHASSIS COMPONENTRY

DRAG LINKS OEM APPROVED

NEWSTAR Number	Axle Model	Replacement for -----				
		TRW Auto Number	Arvin Meritor Number	Euclid Number	Dayton Number	Other Number
S-5620	VARIOUS IHC AXLES	ES2203R	R230051	E6849	310-317	FTR 2203RA 486807C91
Length: Stud Center (DRAG LINK END TO ROD END 5.50")						
S-B945	VARIOUS FORD AXLES	ES3304R	R230422	E9967	310-441	37QC34A D0HZ3B711A
Length: Stud Center (DRAG LINK END TO ROD END 3.12")						
S-13538	FREIGHTLINER COLUMBIA MODELS	_____	_____	_____	346-521	14-12479-000
Length: Stud Center-Stud Center: 31.00"						
S-18145	VOLVO TRUCK MODELS VN1 / VN2	_____	_____	_____	_____	20794767 20407667
Length: Stud Center-Stud Center: 15.25" (ADJUSTABLE)						



FRONT and REAR SUSPENSION PARTS FOR PETERBILT, KENWORTH and FREIGHTLINER APPLICATIONS

NEWSTAR Number	Replacement for -----					Description	Truck Model
	Freightliner Number	Kenworth Number	Peterbilt Number	Dayton Number	Flagg Number		
S-19194	FL1100	_____	_____	330-219	_____	SPRING SHACKLE KIT	FREIGHTLINER CENTURY CLASS
S-19195	FL1200	_____	_____	330-218	_____	SPRING SHACKLE KIT	FREIGHTLINER CENTURY CLASS
S-19197	16-09040-001	_____	_____	334-804	_____	SHIM KIT	FREIGHTLINER CENTURY CLASS
S-A766	16-11890-000	_____	_____	330-123	E530-46	SHACKLE	FREIGHTLINER B AND C CLASS
S-18693	16-12301-000	_____	_____	TB73	TB73	SPRING EYE BUSHING	FREIGHTLINER FLD112 / 120 W CONVENTIONAL FRONT SUSPENSIONS
S-B003	16-12302-000	_____	_____	327-490	B1409-46	SPRING PIN	FREIGHTLINER B AND C CLASS
S-9433	16-12373-000	_____	_____	327-487	B1408-46	SPRING PIN	FREIGHTLINER W/4" WIDE FRONT SPRINGS
S-18487	16-15496-000	_____	_____	_____	_____	BUSHING KIT	FREIGHTLINER SWAYBAR
S-18489	A16-16057-000	_____	_____	_____	_____	SPRING SHACKLE	FREIGHTLINER
S-15468	16-16412-000	_____	_____	RB268	RB268	LEAF SPRING BUSHING	ANTI WALKOUT
S-18356	16-18035-000	_____	_____	_____	_____	LEAF SPRING BUSHING	ANTI WALKOUT
S-19196	23-09860-012	_____	_____	334-1584	FL28	SHIM AND WASHER KIT	FREIGHTLINER CENTURY CLASS
S-19198	680-325-0009	_____	_____	334-1789	_____	SPRING PAD	FREIGHTLINER CENTURY CLASS
S-15348	680-322-01-50	_____	_____	RB233	RB233	LEAF SPRING BUSHING	FREIGHTLINER FS65 W/4" LEAF SPRINGS
S-19138	_____	B65-1007 B65-1012	_____	RB308	RB308	SPRING EYE BUSHING	T800 - 4" WIDE SPRING
S-18869	_____	5295	_____	TB68	TB68	SPRING EYE BUSHING	CABOVER AND CONVENTIONAL
S-18870	_____	5296	_____	327-434	B1372 B1220	SPRING PIN	CABOVER AND CONVENTIONAL
S-19168	_____	15002CSI	_____	325-156	_____	SPRING CHALMERS	KENWORTH T600 - T800
S-9432	_____	_____	02-01781	327-483	B1420-75	SPRING PIN	PETERBILT
S-18801	_____	_____	02-02311-M001	338-1230	E732-75	SPRING HANGER	PETERBILT CONVENTIONAL, 1987 & UP
S-18802	_____	_____	03-01654	338-1224	E697-75	AIRLEAF HOUSING	PETERBILT W/4 LEAF SPRINGS
S-18804	_____	_____	03-01656	338-718	_____	TOP PLATE	PETERBILT W/AIR TRAC SYSTEMS
S-18803	_____	_____	03-05117	338-1797	E853-75	LOW AIRLEAF HOUSING	PETERBILT W/AIR TRAC SYSTEMS
S-18805	_____	_____	03-07296	_____	_____	WEAR PLATE	PETERBILT W/AIR TRAC SYSTEMS
S-18630	_____	_____	03AL1	334-460	PB7	SPRING EYE BUSHING KIT	PETERBILT
S-18631	_____	_____	03AL2	334-814	PB44	SPRING EYE BUSHING KIT	PETERBILT

NEWSTAR™ CHASSIS COMPONENTRY

SUSPENSION PARTS FOR INTERNATIONAL TRUCK APPLICATIONS



NEWSTAR Number	----- Replacement for -----			
	International Number	Flagg Number	Dayton Number	Euclid Number
FRONT SPRING PINS				
S-5017	76771R1	B1120-55	327-240	-----
S-2357	303865C1	B1268-55	327-237	-----
S-4882	443864C1	B1112-50	327-124	E1817TU
S-5779	507203C1	B1400-55	327-443	E7318
S-2634	688952R1	B1220-55	327-305	EDT327-305
S-5087	1648109C1	B1369-55	327-229	E7312
S-5088	1648110C1	B1368-55	327-230	E7316
S-7580	1661976C3	B1434-55	327-480	-----
S-7579	1671766C3	B1435-55	327-479	-----
S-7580	3511254C1	-----	327-480	-----
REAR SPRING PINS				
S-3598	99530HB	B1077-55	327-232	-----
S-5102	193989R1	B1165-55	327-281	-----
S-2409	206258R1	B1261-55	327-282	E7322
S-2680	303859C1	B1314-55	327-256	-----
SPRING EYE BUSHING				
S-5601	688951R1	TB26	322-127	E7279
S-C302	1698113C1	RNK-BM	322-100	E1876
SPRING SHACKLES				
S-4523	301701C1	E304-55	330-110	-----
S-3959	468699C1	E396-55	330-101	-----
S-5247	503959C1	E482-55	330-119	-----
S-8732	546036C1	E483-55	330-108	-----
S-8733	1654269C1	E692-55	330-160	-----
S-15182	1664263C1	E736-55	328-1218	-----
MISCELLANEOUS SPRING ASSEMBLY PARTS				
S-3199	441246C1	LP-113	334-446	-----
S-D892	497501C1	IH-5	321-195	E3784
S-11752	571960C1	IH14	334-747	-----
DAYTON 4-SPRING SUSPENSION SHACKLE				
S-3137	346130C1	E474-55	338-684	-----
FRONT AND REAR ENGINE MOUNTS AND BUSHINGS				
S-2595	80445R1	-----	-----	-----
S-3790	200106R1	-----	-----	E7643
S-2888	286324C2	-----	-----	-----
S-2729	470031C2	-----	-----	-----
S-11575	476869C1	-----	-----	-----
S-3777	479237C1	-----	-----	-----
S-3938	503579C1	UM207	329-150U	E10792
S-A829	507569C1	-----	-----	E8918
S-2731	753997C93	-----	-----	-----
S-2121	969783R1	-----	-----	E7484
S-3778	987395R3	-----	-----	-----
S-D905	1664723C3	-----	-----	E7482
TORQUE ROD BUSHINGS				
S-17746	1693546C1	MR700	345-700	-----

NEWSTAR™ CHASSIS COMPONENTRY



**TORQUE ROD ASSEMBLIES
FOR VARIOUS APPLICATIONS
MADE IN THE USA OEM APPROVED**

NEWSTAR Number	----- Replacement for -----				Length
	OEM Number	Flagg Number	Dayton Number	Euclid Number	
S-10239	03-04059	PB15	345-210	E4771	23"
S-18785	03-04327	PB33	345-211	E5083	17.34"
S-E913	493920C3 3581271C1	IH11	345-188	E10764	18.125"
S-14653	501565C2 3580088C1	IH22	-----	-----	25.39"
S-E914	2504006C91	IH12	345-187	E10765	22"
S-11651	3187322	VT20	345-219	E8821	22"
S-13373	A16-16749-001 681-326-67-16	FL39	345-212	-----	24"
S-11652	A16-16749-002	-----	-----	-----	24.5"
S-13291	17-QF-460-P215	-----	-----	-----	21.5"
S-13292	17-QF-464-P180	-----	-----	-----	18"
S-13293	17-QF-464-P183	-----	-----	-----	18.25"
S-13289	17-QF-473-M	-----	-----	-----	20.5"
S-13287	17-QF-473-M2	-----	-----	-----	21"
S-13290	17-QF-473-M3	-----	-----	-----	22.5"
S-13288	17-QF-473-M4	-----	-----	-----	24.3"



S-8528
SHOWN

**FRONT and REAR SPRINGS PARTS FOR
FORD / STERLING APPLICATIONS**

NEWSTAR Number	----- Replacement for -----			Description
	Ford Number	Dayton Number	Flagg Number	
S-8528	D0HZ-5780-B	327-212	B1205-43	Rear Shackle Pin
S-6487	E5HZ-5780-A	327-211	B1310-43	Front Shackle Pin
S-8527	E5HZ-5780-B	327-209	B1311-43	Front Shackle Pin

NEWSTAR™ CHASSIS COMPONENTRY

FRAME BOLTS & LOCKNUTS FOR VARIOUS APPLICATIONS OEM APPROVED

S-4433
SHOWN



NEWSTAR Number	----- Replacement for -----			Locknut Size	Description
	International Truck Number	Freightliner Number	Volvo Number		
S-16983	144422H	_____	_____	9/16" - 18	Frame Locknuts
S-7621	144423H	_____	25095352	1/2" - 20	Frame Locknuts
S-7622	144424H	_____	25173887	3/4" - 16	Frame Locknuts
S-5070	144425H	_____	_____	7/8" - 14	Frame Locknuts
S-4433	414051C1	23-11011-125	8397029	1/2"-20 X 1-1/4"	Frame Bolts
S-4435	414053C1	23-11011-175	8397031	1/2"-20 X 1-3/4"	Frame Bolts
S-4436	414054C1	23-11011-200	8397032	1/2"-20 X 2"	Frame Bolts
S-4437	414055C1	23-11011-225	_____	1/2"-20 X 2-1/4"	Frame Bolts
S-4505	414076C1	23-11015-150	8397076	5/8"-18 X 1-1/2"	Frame Bolts
S-4733	414077C1	23-11015-175	8397077	5/8"-18 X 1-3/4"	Frame Bolts
S-4734	414078C1	23-11015-200	8397078	5/8"-18 X 2"	Frame Bolts
S-4735	414079C1	23-11015-225	8397079	5/8"-18 X 2-1/4"	Frame Bolts
S-4736	414080C1	23-11015-250	8397080	5/8"-18 X 2-1/2"	Frame Bolts
S-5861	414081C1	23-11015-275	8397081	5/8"-18 X 2-3/4"	Frame Bolts
S-5862	414082C1	23-11015-300	8397082	5/8"-18 X 3"	Frame Bolts
S-4442	414084C1	23-11015-350	8397084	5/8"-18 X 3-1/2"	Frame Bolts
S-4737	414087C1	23-11020-008	8397200	1/2" - 20	Frame Locknuts
S-4738	414089C1	23-11020-010	8397202	5/8" - 18	Frame Locknuts
S-C635	416734C1	23-11017-200	8397033	3/4"-16 X 2"	Frame Bolts
S-7604	416736C1	23-11017-250	8397088	3/4"-16 X 2-1/2"	Frame Bolts
S-14718	416739C1	_____	_____	3/4"-16 X 3"	Frame Bolts
S-14109	416740C1	_____	_____	3/4"-16 X 3-1/2"	Frame Bolts
S-4740	416743C1	23-11020-012	8397197	3/4" - 16	Frame Locknuts
S-8420	438286C1	23-11011-175	8397031	5/8"-18 X 4-1/2"	Frame Bolts

U-BOLTS FOR INTERNATIONAL TRUCK and FREIGHTLINER APPLICATIONS MADE IN THE USA



NEWSTAR Number	----- Replacement for -----			Length	Thread Size
	International Truck Number	Freightliner Number			
S-A414	1514626C1	_____	_____	12.4"	7/8"-14
S-3072	465916C1	_____	_____	10"	3/4"-16
S-4983	581742C1	_____	_____	13.5"	3/4"-16
S-B023	_____	11-09624-090	_____	12.4"	7/8"-14
S-13703	_____	11-09363-065	_____	6.5"	3/4"-16
S-13829	_____	11-09363-080	_____	8"	3/4"-16
S-18237	_____	16-15649-001	_____	15.5 X 17"	5/8"-18
S-18913	_____	16-15649-000	_____	14.5 x 16"	5/8"-18

NEWSTAR™ CHASSIS COMPONENTRY



S-8122
SHOWN



S-A637
SHOWN

FRONT and REAR SUSPENSION PARTS FOR MACK APPLICATIONS

NEWSTAR Number	Description / Application Bolt Size	----- Replacement for -----				
		Mack Number	PAI Number	BWP Number	Dayton Number	Euclid Number
S-9122	Spring Bracket Bolt-7/8" Rear Suspension	3-AX-987	4680	M2895	327-309	E3692
S-A637	Steel Collar,Trunnion	8-QD-137	5191	-----	-----	-----
S-7611	Bronze Bushing Rear Trunnion, 44M Lbs	10-QK-157	4890	M2901	322-114	E2925
S-7613	Bronze Bushing Front Trunnion, 38M Lbs	10-QK-229-A	-----	-----	324-102	-----
S-8121	Insulator,Rubber Rear Suspension, Upper 38M Lbs	10-QK-365-A	4811	M2110	325-112	E2917
S-8122	Insulator Rear Suspension, Upper 44M Lbs	10-QK-370	4910	M2111	325-113	E2919
S-A636	Spacer,Rear Suspension, 44M,55M,65M Lbs.	13-QK-246	4752	M2918	338-729	E3689
S-8610	Front Spring Pin, R and CH Models	44-QK-173-B	4682	M2887	327-342	E3715
S-8127	Insulator,Rubber Cab Trunnion.	20-QL-1131	4903	-----	-----	-----
S-5616	Torque Rod Nut	21-AX-772	2246	M1483	334-291	-----

INTERCHANGE INDEX

Replacement for Arvin Meritor

NEWSTAR Number	Replacement For	Page Nm
S-15614	1315B	4
S-5057	A23144J192	7
S-5056	A23144K193	7
S-6659	A3144A547	8
S-7357	A3144D524	8
S-B231	A3144D549	9
S-B230	A3144D550	9
S-7358	A3144E525	7
S-5988	A3144F448	8
S-6659	A3144G449	8
S-5049	A3144J296	8
S-5048	A3144K297	8
S-7358	A3144N456	7
S-7357	A3144P458	8
S-5056	A3144Q225	7
S-5057	A3144R226	7
S-6659	A3144U437	8
S-5988	A3144V438	8
S-9488	A3144V516	10
S-9489	A3144V517	10
S-5988	A3144Z546	8
S-A483	E-Z Steer	5
S-A484	E-Z Steer	5
S-C119	E-Z STEER	5
S-C464	E-Z Steer	5
S-4996	R200003 Bronze	1
S-5014	R200007 Bronze	1
S-5015	R200008 Bronze	1
S-7190	R200017 Bronze	1
S-5132	R200032 Bronze	1
S-6663	R200034 Bronze	2
S-7463	R200042 Nylon	2
S-6504	R200044 Bronze	2
S-3682	R200045 Nylon	2
S-9722	R200046 Bronze	2
S-6503	R200050 Bronze	2
S-6502	R200051 Bronze	3
S-5223	R200052 Bronze	3
S-3596	R200054 Bronze	3
S-4948	R200055 Bronze	3
S-4949	R200057 Bronze	3
S-6072	R200065 Bronze	3
S-6643	R200066 Bronze	3
S-14695	R200067 Bronze	4
S-7191	R200068 Bronze	4
S-6073	R200071 Bronze	4
S-5134	R200073 Bronze	4
S-7801	R200074 Bronze	2
S-6939	R200123 Nylon	1
S-6938	R200142 Bronze	1
S-6492	R200143 Bronze	1
S-6942	R200156 Nylon	2
S-6943	R200157 Bronze	2
S-6944	R200167 Nylon	1
S-6945	R200168 Nylon	2
S-6946	R200170 Bronze	3
S-6947	R200172 Bronze	1
S-5132	R200178	1
S-5132	R200178	1
S-6950	R200193	2
S-6948	R200195 Bronze	3
S-6949	R200198 Bronze	3
S-6950	R200199 Bronze	2
S-9365	R200250 E-Z Steer	4
S-6486	R200251 E-Z Steer	4
S-6485	R200267 E-Z Steer	4
S-9304	R200268 Bronze	4
S-8371	R200269 Bronze	5
S-4988	R200278 E-Z Steer	4
S-D562	R200281 Bronze	5
S-6963	R201300 Bronze	3
S-6964	R201307 E-Z Steer	4
S-6965	R201309 E-Z Steer	4
S-8513	R201310 Bronze	6
S-8529	R201312 E-Z Steer	4
S-11612	R201314	6
S-8678	R201315 E-Z Steer	4
S-C119	R201419	5
S-14680	R201419B	5
S-A811	R201426 Bronze	4
S-13563	R201427	5
S-17617	R201476	6
S-15614	R201505 Bronze	4
S-12090	R230006	7
S-12091	R230007	7
S-4768	R230018 Roadside	7
S-4767	R230019 Curbside	7
S-5049	R230023	8
S-7459	R230028 Roadside	7
S-7460	R230029 Curbside	7
S-8634	R230036 Curbside	8
S-8635	R230037 Roadside	8
S-C014	R230040 Roadside	9

Replacement for Arvin Meritor

NEWSTAR Number	Replacement For	Page Nm
S-7688	R230044 Curbside	8
S-5620	R230051	12
S-C015	R230056 Curbside	9
S-5056	R230060 Roadside	7
S-5057	R230061 Curbside	7
S-7358	R230068 Roadside	7
S-7357	R230069 Curbside	8
S-5049	R230070 Curbside	8
S-5048	R230071 Roadside	8
S-6659	R230072 Roadside	8
S-5988	R230073 Curbside	8
S-9488	R230098 Curbside	10
S-9489	R230099 Roadside	10
S-B230	R230104 Curbside	9
S-B231	R230105 Roadside	9
S-18491	R230137 Roadside	10
S-18490	R230138 Roadside	10
S-E395	R230139 Curbside	10
S-E394	R230140 Curbside	10
S-F248	R230141 Roadside	10
S-F249	R230142 Curbside	10
S-F250	R230143 Roadside	9
S-F251	R230144 Curbside	9
S-F305	R230145 Curbside	10
S-F306	R230146 Roadside	10
S-F505	R230217 Roadside	9
S-F506	R230218 Curbside	9
S-8160	R230238 Curbside	8
S-8999	R230246 Roadside	10
S-9000	R230247 Curbside	10
S-16147	R230403 Roadside	7
S-16146	R230404 Curbside	7
S-D898	R230408 Curbside	9
S-D899	R230409 Roadside	9
S-D639	R230413 Roadside	9
S-D640	R230414 Curbside	9
S-B599	R230415 Roadside	9
S-B600	R230416 Curbside	9
S-B945	R230422	12
S-A764	R230558 Roadside	9
S-A765	R230559 Curbside	9
S-8292	R250012	11
S-4382	R250025	11
S-4707	R250044	11
S-A828	R250051	11
S-16393	R250063	11
S-4603	R250066	11
S-E393	R250067	11
S-17648	R250068	11
S-8154	R250083	11
S-17354	R250088	11
S-A719	R250112	11
S-C618	R250113	11
S-13415	R250120	11
S-13715	R250122	11
S-C367	R250367	11
S-6939	ROR 123	1
S-6963	ROR 1300	3
S-6964	ROR 1307	4
S-6965	ROR 1309	4
S-8513	ROR 1310	6
S-8529	ROR 1312	4
S-8678	ROR 1315	4
S-C119	ROR 1419	5
S-6938	ROR 142	1
S-6942	ROR 156	2
S-6943	ROR 157	2
S-6944	ROR 167	1
S-6945	ROR 168	2
S-6946	ROR 170	3
S-6947	ROR 172	3
S-5132	ROR 178	1
S-6948	ROR 195	3
S-6949	ROR 198	3
S-6950	ROR 199	2

Replacement for BWP

S-5616	M1483	16
S-8121	M2110	16
S-8122	M2111	16
S-8610	M2887	16
S-9122	M2895	16
S-7611	M2901	16
S-A636	M2918	16

Replacement for Dana® - Heavy Duty

NEWSTAR Number	Replacement For	Page Nm
S-A764	080-TR-116	9
S-A765	080-TR-117	9
S-A483	120K1100	5
S-A484	140K1100	5
S-D639	140TR109	9
S-D640	140TR110	9
S-B599	140TR111	9
S-B600	140TR112	9

Replacement for Dana® (Formerly Eaton)

S-13975	328343	6
S-C464	328344	5
S-13976	328345	6
S-13980	328346	6
S-13982	328347	6
S-13981	328348	6
S-13983	328349	6
S-13974	329432	5
S-13973	329433	5
S-13979	329434	6
S-6485	806355	4
S-6486	806356	4
S-9365	811525	4
S-E394	817018	10
S-E395	817019	10
S-6659	820626	8
S-5988	820627	8
S-6659	820694	8
S-5988	820695	8
S-C464	823078	5
S-7358	1006148	7
S-7357	1006149	8
S-6485	1008431	4
S-9365	1008500	4
S-8999	1009009	10
S-9000	1009010	10
S-8371	806355B	5
S-F187	811525B	4
S-D562	823078B	5

Replacement for Dayton Heavy Duty

S-4996	300-110	1
S-5014	300-118	1
S-5015	300-120	1
S-6492	300-140	1
S-7190	300-142	1
S-6939	300-150	1
S-6938	300-159	1
S-6944	300-171	1
S-6947	300-182	1
S-5132	300-188	1
S-6663	300-194	2
S-6943	300-195	2
S-6942	300-196	2
S-6950	300-204	2
S-7801	300-205	2
S-7463	300-206	2
S-6504	300-207	2
S-3682	300-208	2
S-9722	300-209	2
S-6946	300-210	3
S-6945	300-211	2
S-6503	300-215	2
S-6949	300-216	3
S-6502	300-217	3
S-5223	300-218	3
S-3596	300-220	3
S-4948	300-221	3
S-4949	300-223	3
S-6072	300-231	3
S-6948	300-232	3
S-6643	300-233	3
S-7191	300-234	3
S-14695	300-235	4
S-6963	300-240	3
S-6964	300-242	4
S-6965	300-244	4
S-6073	300-245	4
S-5134	300-248	4
S-7801	300-249	2
S-6485	300-257	4
S-6486	300-258	4
S-8513	300-264	6
S-8529	300-265	4
S-8678	300-266	4
S-9365	300-267	4
S-9304	300-268	4
S-4988	300-269	4
S-A483	300-271	5

INTERCHANGE INDEX

Replacement for Dayton Heavy Duty

NEWSTAR Number	Replacement For	Page Nm
S-A484	300-272	5
S-8371	300-274	5
S-A811	300-276	4
S-13563	300-277	5
S-18334	300-278	5
S-F187	300-283	4
S-15614	300-284	4
S-F091	300-287	5
S-F092	300-288	5
S-D819	300-289	5
S-C464	300-293	5
S-13976	300-295	6
S-11612	300-296	6
S-D562	300-297	5
S-C119	300-299	5
S-13980	300-303	6
S-13981	300-304	6
S-13982	300-305	6
S-13983	300-306	6
S-13975	300-307	6
S-13976	300-308	6
S-14680	300-317	5
S-13979	300-325	6
S-9365	300-326	4
S-5056	310-121	7
S-5057	310-122	7
S-12090	310-129	7
S-12091	310-130	7
S-16147	310-154	7
S-16146	310-155	7
S-4768	310-183	7
S-4767	310-184	7
S-7459	310-215	7
S-7460	310-216	7
S-7358	310-222	7
S-7357	310-223	8
S-5049	310-228	8
S-5048	310-229	8
S-8634	310-277	8
S-8635	310-278	8
S-6659	310-283	8
S-5988	310-284	8
S-8999	310-285	10
S-9000	310-286	10
S-7688	310-299	8
S-5620	310-317	12
S-C014	310-326	9
S-C015	310-327	9
S-F505	310-350	9
S-F506	310-351	9
S-8160	310-355	8
S-B230	310-395	9
S-B231	310-396	9
S-6659	310-433	8
S-5988	310-434	8
S-A764	310-437	9
S-A765	310-438	9
S-B945	310-441	12
S-E395	310-455	10
S-E394	310-456	10
S-F248	310-467	10
S-F249	310-468	10
S-F250	310-469	9
S-F251	310-470	9
S-D899	310-471	9
S-D898	310-472	9
S-F305	310-483	10
S-F306	310-484	10
S-18491	310-591	10
S-18490	310-592	10
S-D892	321-195	13
S-C302	322-100	13
S-7611	322-114	16
S-5601	322-127	13
S-7613	324-102	16
S-8121	325-112	16
S-8122	325-113	16
S-19168	325-156	12
S-4882	327-124	13
S-8527	327-209	14
S-6487	327-211	14
S-8528	327-212	14
S-5087	327-229	13
S-5088	327-230	13
S-3598	327-232	13
S-2357	327-237	13
S-5017	327-240	13
S-2680	327-256	13
S-5102	327-281	13
S-2409	327-282	13
S-2634	327-305	13
S-9122	327-309	16

Replacement for Dayton Heavy Duty

NEWSTAR Number	Replacement For	Page Nm
S-8610	327-342	16
S-18870	327-434	12
S-5779	327-443	13
S-7579	327-479	13
S-7580	327-480	13
S-9432	327-483	12
S-9433	327-487	12
S-8003	327-490	12
S-15182	328-1218	13
S-3938	329-1500	13
S-3959	330-101	13
S-8732	330-108	13
S-4523	330-110	13
S-5247	330-119	13
S-A766	330-123	12
S-8733	330-160	13
S-19195	330-218	12
S-19194	330-219	12
S-5616	334-291	16
S-3199	334-446	13
S-18630	334-460	12
S-11752	334-747	13
S-19197	334-804	12
S-18631	334-814	12
S-19196	334-1584	12
S-19198	334-1789	12
S-18802	338-1224	12
S-18801	338-1230	12
S-18803	338-1797	12
S-3137	338-684	13
S-18804	338-718	12
S-A636	338-729	16
S-E914	345-187	14
S-E913	345-188	14
S-10239	345-210	14
S-18785	345-211	14
S-13373	345-212	14
S-11651	345-219	14
S-17746	345-700	13
S-8292	346-142	11
S-4382	346-189	11
S-8154	346-196	11
S-4707	346-240	11
S-A828	346-249	11
S-16393	346-279	11
S-4603	346-293	11
S-E393	346-370	11
S-17648	346-371	11
S-17354	346-377	11
S-A719	346-384	11
S-C618	346-385	11
S-13415	346-386	11
S-13715	346-388	11
S-13716	346-420	11
S-13717	346-421	11
S-18039	346-520	11
S-13538	346-521	12
S-15348	RB233	12
S-15468	RB268	12
S-19138	RB308	12
S-18869	TB68	12
S-18693	TB73	12

Replacement for Euclid

NEWSTAR Number	Replacement For	Page Nm
S-F091	E10104B	5
S-F092	E10105B	5
S-D819	E10106B	5
S-13973	E10107B	5
S-F248	E10108	10
S-F249	E10109	10
S-F250	E10110	9
S-F251	E10111	9
S-E395	E10137	10
S-E394	E10138	10
S-A764	E10148	9
S-A765	E10149	9
S-E913	E10764	14
S-E914	E10765	14
S-3777	E10792	13
S-C464	E11297	5
S-0562	E11394B	5
S-C618	E11463	11
S-18334	E11785B	5
S-F305	E11788	10
S-F306	E11789	10
S-C119	E11808C	5
S-17617	E11814C	6
S-4882	E1817TU	13
S-C302	E1876	13
S-8121	E2917	16

Replacement for Euclid

NEWSTAR Number	Replacement For	Page Nm
S-8122	E2919	16
S-7611	E2925	16
S-A636	E3689	16
S-9122	E3692	16
S-8610	E3715	16
S-D892	E3784	13
S-4996	E4431B	1
S-5014	E4432B	1
S-5015	E4433B	1
S-6939	E4434N	1
S-6492	E4438B	1
S-6938	E4441B	1
S-6947	E4442B	1
S-6944	E4442N	1
S-5132	E4447B	1
S-6663	E4448B	2
S-6943	E4449B	2
S-6942	E4449N	2
S-6950	E4450B	2
S-7801	E4451B	2
S-7463	E4451N	2
S-6504	E4452B	2
S-9722	E4453B	2
S-3682	E4453N	2
S-6946	E4454B	3
S-6945	E4454N	2
S-6503	E4457B	2
S-6949	E4458B	3
S-8529	E4458C	4
S-6502	E4459B	3
S-5223	E4460B	3
S-3596	E4461B	3
S-4948	E4462B	3
S-4949	E4463B	3
S-6072	E4467B	3
S-6948	E4468B	3
S-6643	E4469B	3
S-14695	E4470B	4
S-7191	E4471B	3
S-6963	E4595B	3
S-7190	E4598B	1
S-6073	E4599B	4
S-12090	E4600	7
S-12091	E4601	7
S-4768	E4604	7
S-4767	E4605	7
S-8635	E4608	8
S-8634	E4609	8
S-5056	E4610	7
S-5057	E4611	7
S-7358	E4614	7
S-7357	E4615	8
S-5048	E4616	8
S-5049	E4617	8
S-6659	E4628	8
S-5988	E4629	8
S-7459	E4630	7
S-7460	E4631	7
S-6964	E4694C	4
S-6965	E4695C	4
S-8371	E4696B	5
S-6485	E4696C	4
S-5134	E4697B	4
S-10239	E4771	14
S-18785	E5083	14
S-8292	E5310	11
S-4382	E5325	11
S-4707	E5358	11
S-A828	E5366	11
S-16393	E5386	11
S-4603	E5390	11
S-C014	E5391	9
S-C015	E5402	9
S-F505	E6135	9
S-F506	E6136	9
S-F187	E6194B	4
S-9365	E6194C	4
S-9304	E6198B	4
S-15614	E6199B	4
S-8678	E6199C	4
S-8154	E6685	11
S-7688	E6775	8
S-8160	E6776	8
S-E393	E6818	11
S-17648	E6819	11
S-17354	E6825	11
S-5620	E6849	12
S-B230	E6856	9
S-B231	E6857	9
S-8513	E6868B	6
S-6486	E6869C	4
S-4988	E6875C	4



INTERCHANGE INDEX

Replacement for Euclid

NEWSTAR Number	Replacement For	Page Nm
S-5601	E7279	13
S-5087	E7312	13
S-5088	E7316	13
S-5779	E7318	13
S-2409	E7322	13
S-3778	E7482	13
S-2731	E7484	13
S-3790	E7643	13
S-8999	E8757	10
S-9000	E8758	10
S-11651	E8821	14
S-3938	E8918	13
S-13715	E8981	11
S-13415	E9897	11
S-13716	E9901	11
S-13717	E9903	11
S-C367	E9910	11
S-A719	E9911	11
S-A811	E9941B	4
S-13563	E9942B	5
S-A484	E9942C	5
S-D639	E9949	9
S-D640	E9950	9
S-B599	E9951	9
S-B600	E9952	9
S-D899	E9962	9
S-D898	E9963	9
S-B945	E9967	12
S-2634	EDT327-305	13

Replacement for Flagg

S-3598	B1077-55	13
S-4882	B1112-50	13
S-5017	B1120-55	13
S-5102	B1165-55	13
S-8528	B1205-43	14
S-18870	B1220	12
S-2634	B1220-55	13
S-2409	B1261-55	13
S-2357	B1268-55	13
S-6487	B1310-43	14
S-8527	B1311-43	14
S-2680	B1314-55	13
S-5088	B1368-55	13
S-5087	B1369-55	13
S-18870	B1372	12
S-5779	B1400-55	13
S-9433	B1408-46	12
S-B003	B1409-46	12
S-9432	B1420-75	12
S-7580	B1434-55	13
S-7579	B1435-55	13
S-4523	E304-55	13
S-3959	E396-55	13
S-3137	E474-55	13
S-5247	E482-55	13
S-8732	E483-55	13
S-A766	E530-46	12
S-8733	E692-55	13
S-18802	E697-75	12
S-18801	E732-75	13
S-15182	E736-55	13
S-18803	E853-75	12
S-19196	FL28	12
S-13373	FL39	14
S-D892	IH-5	13
S-E913	IH11	14
S-E914	IH12	14
S-11752	IH14	13
S-14653	IH22	14
S-3199	LP-113	13
S-17746	MR700	13
S-10239	PB15	14
S-18785	PB33	14
S-18631	PB44	12
S-18630	PB7	12
S-15348	RB233	16
S-15468	RB268	16
S-19138	RB308	12
S-C302	RNK-BM	13
S-5601	TB26	13
S-18869	TB68	16
S-18693	TB73	16
S-3938	UM207	13
S-11651	VT20	14

Replacement for Ford / Sterling

NEWSTAR Number	Replacement For	Page Nm
S-6939	B7TZ3111C	1
S-6492	B7TZ3111F	1
S-5056	C1TZ3A131C	7
S-6939	C2TZ3111D	1
S-6944	C3TZ3111B	1
S-6942	C4TZ3111A	2
S-6943	C4TZ3111B	2
S-8292	C7TZ3304A	11
S-4768	C7TZ3A130D	7
S-4767	C7TZ3A131D	7
S-5057	C8TZ3A130A	7
S-16146	DOHZ-3A130-A	7
S-16147	DOHZ-3A131-A	7
S-8528	DOHZ-5780-B	14
S-6942	DOHZ3111C	2
S-6943	DOHZ3111E	2
S-6945	DOHZ3111E	2
S-6946	DOHZ3111E	3
S-5049	DOHZ3A130B	8
S-5048	DOHZ3A131B	8
S-B945	DOHZ3B711A	12
S-6938	D1HZ3111A	1
S-6947	D1HZ3111B	1
S-6949	D5HZ3111C	3
S-6502	D6HZ3111A	3
S-6503	D6HZ3111B	2
S-6504	D6TZ3111A	2
S-8154	D7UZ3A130A	11
S-7688	E0TZ3A131C	8
S-4382	E3HZ3304H	11
S-7357	E3HZ3A130A	8
S-7358	E3HZ3A131A	7
S-4382	E4HZ3304B	11
S-7357	E4HZ3A130A	8
S-7358	E4HZ3A131A	7
S-6487	E5HZ-5780-A	14
S-8527	E5HZ-5780-B	14
S-8160	E9TZ3A131F	8
S-D898	F1HZ3A130A	9
S-D899	F1HZ3A131A	9
S-D898	F3HZ3A130B	9
S-D899	F3HZ3A131B	9
S-4382	F5HZ3304YA	11
S-F305	F6HZ3A130AA	10
S-F306	F6HZ3A131AA	10

Replacement for Freightliner

S-13703	11-09363-065	15
S-13829	11-09363-080	15
S-B023	11-09624-090	15
S-13715	14-10281-000	11
S-13415	14-12098-001	11
S-13716	14-12098-005	11
S-13717	14-12349-000	11
S-13538	14-12479-000	12
S-19197	16-09040-001	12
S-A766	16-11890-000	12
S-18693	16-12301-000	12
S-B003	16-12302-000	12
S-9433	16-12373-000	12
S-18487	16-15496-000	12
S-18913	16-15649-000	15
S-18237	16-15649-001	15
S-15468	16-16412-000	12
S-18356	16-18035-000	12
S-19196	23-09860-012	12
S-4433	23-11011-125	15
S-4435	23-11011-175	15
S-8420	23-11011-175	15
S-4436	23-11011-200	15
S-4437	23-11011-225	15
S-4505	23-11015-150	15
S-4733	23-11015-175	15
S-4734	23-11015-200	15
S-4735	23-11015-225	15
S-4736	23-11015-250	15
S-5861	23-11015-275	15
S-5862	23-11015-300	15
S-4442	23-11015-350	15
S-C635	23-11017-200	15
S-7604	23-11017-250	15
S-4737	23-11020-008	15
S-4738	23-11020-010	15
S-4740	23-11020-012	15
S-15348	680-322-01-50	12
S-19198	680-325-0009	12
S-13373	681-326-67-16	14
S-18489	A16-16057-000	12
S-13373	A16-16749-001	14
S-11652	A16-16749-002	14

Replacement for Freightliner

NEWSTAR Number	Replacement For	Page Nm
S-18491	ABPP6073380810	10
S-18490	ABPP6073382210	10
S-6485	ETN806355	4
S-19194	FL1100	12
S-19195	FL1200	12
S-8678	TDAR201315	4

Replacement for GMC

S-6950	694332	2
S-3682	722166	2
S-5988	798203	8
S-6659	798204	8
S-6948	2010021	3
S-8634	2037140	8
S-8635	2037142	8
S-6939	2264897	1
S-6942	2442145	2
S-5056	2456810	7
S-5057	2456811	7
S-6945	2457865	2
S-6944	2492007	1
S-6643	8885621	3
S-6643	8885856	3
S-F091	12540328	5
S-F092	12540329	5
S-D819	12540330	5
S-F248	12548107	10
S-F249	12548108	10
S-F250	12548110	9
S-F251	12548111	9
S-6964	15510849	4
S-6943	15512233	2
S-6946	15512234	3
S-6947	15512235	1
S-5132	15512237	1
S-7357	15515805	8
S-5048	15584419	8
S-5049	15584420	8
S-6949	15585841	3
S-6965	15618118	4
S-F248	15619286	10
S-18145	20407667	12
S-18145	20794767	12
S-9722	7221668	2

Replacement for International Truck

S-5056	110362R91	7
S-5057	110363R91	7
S-12090	127241R91	7
S-12091	127242R91	7
S-16983	144422H	15
S-7621	144423H	15
S-7622	144424H	15
S-5070	144425H	15
S-A414	1514626C1	15
S-5087	1648109C1	13
S-5088	1648110C1	13
S-5223	1648204C91	3
S-7459	1649637C91	7
S-7460	1649638C91	7
S-8733	1654269C1	13
S-16393	1658897C92	11
S-4988	1658934C91	4
S-F505	1658946C91	9
S-F506	1658947C91	9
S-9304	1660271C91	4
S-4767	1660272C92	7
S-4768	1660273C92	7
S-C367	1660439C91	11
S-A719	1661437C91	11
S-C618	1661867C91	11
S-7580	1661976C3	13
S-15182	1664263C1	13
S-D905	1664723C3	13
S-A764	1668224C91	9
S-A765	1668225C91	9
S-D639	1668407C91	9
S-D640	1668408C91	9
S-B599	1668409C91	9
S-B600	1668410C91	9
S-A483	1668411C92	5
S-13563	1668412C91	5
S-A484	1668412C92	5
S-B231	1668479C91	9
S-B230	1668480C91	9
S-7579	1671766C3	13
S-18334	1685405C91	5
S-17746	1693546C1	13

INTERCHANGE INDEX

Replacement for International Truck

NEWSTAR Number	Replacement For	Page Nm
S-C367	1695714C91	11
S-C302	1698113C1	13
S-5102	193989R1	13
S-3790	200106R1	13
S-2409	206258R1	13
S-C119	2500542C91	5
S-E914	2504006C91	14
S-12090	263498C91	7
S-12091	263499C91	7
S-2888	286324C2	13
S-4523	301701C1	13
S-6938	303136C91	1
S-6943	303138C92	2
S-6947	303139C91	1
S-6946	303140C92	3
S-2680	303859C1	13
S-2357	303865C1	13
S-5132	306921C93	1
S-3137	346130C1	13
S-7580	3511254C1	13
S-14653	3580088C1	14
S-E913	3581271C1	14
S-7463	39942C93	2
S-4707	400745C92	11
S-6663	408547C93	2
S-4433	414051C1	15
S-4435	414053C1	15
S-4436	414054C1	15
S-4437	414055C1	15
S-4505	414076C1	15
S-4733	414077C1	15
S-4734	414078C1	15
S-4735	414079C1	15
S-4736	414080C1	15
S-5861	414081C1	15
S-5862	414082C1	15
S-4442	414084C1	15
S-4737	414087C1	15
S-4738	414089C1	15
S-C635	416734C1	15
S-7604	416736C1	15
S-14718	416739C1	15
S-14109	416740C1	15
S-4740	416743C1	15
S-8420	438286C1	15
S-3199	441246C1	13
S-5988	442354C92	8
S-4882	443864C1	13
S-4767	450062C91	7
S-4768	450063C91	7
S-6950	452344C91	2
S-3072	465916C1	15
S-3959	468699C1	13
S-2729	470031C2	13
S-5223	473695C91	3
S-6949	474520C91	3
S-11575	476869C1	13
S-3777	479237C1	13
S-6659	486354C91	8
S-5988	486355C91	8
S-5620	486807C91	12
S-4603	489023C91	11
S-3596	493092C92	3
S-4948	493094C95	3
S-4949	493095C91	3
S-E913	493920C3	14
S-D892	497501C1	13
S-14653	501565C2	14
S-16393	503523C94	11
S-3938	503579C1	13
S-5247	503959C1	13
S-5988	506684C91	8
S-5779	507203C1	13
S-A829	507569C1	13
S-7459	507835C91	7
S-7460	507836C91	7
S-7358	507837C91	7
S-7357	507838C91	8
S-8732	546036C1	13
S-6948	549800C91	3
S-11752	571960C1	13
S-5988	581063C91	8
S-4983	581742C1	15
S-5134	586806C91	4
S-7801	588808C91	2
S-6659	590583C91	8
S-5988	590584C91	8
S-6663	591945C92	2
S-6949	597258C91	3
S-4996	615569R91	1
S-5601	688951R1	13

Replacement for International Truck

NEWSTAR Number	Replacement For	Page Nm
S-2634	688952R1	13
S-5014	69971R91	1
S-5015	70594R91	1
S-2731	753997C93	13
S-5017	76771R1	13
S-2595	80445R1	13
S-5048	969055R91	8
S-5049	969056R91	8
S-2121	969783R1	13
S-3778	987395R3	13
S-3598	99530HB	13
S-4996	FAK 4446	1
S-5014	FAK 4450	1
S-5015	FAK 4451	1
S-5132	FAK 4475	1
S-6663	FAK 4477	2
S-7463	FAK 4485	2
S-4948	FAK 4496	3
S-3596	FAK 4497	3
S-4948	FAK 4498	3
S-4949	FAK 4500	3
S-5134	FAK 4516	4
S-7801	FAK 4517	2
S-6939	FAK 4527	1
S-6938	FAK 4531	1
S-6492	FAK 4532	1
S-6942	FAK 4538	2
S-6943	FAK 4539	2
S-6944	FAK 4540	1
S-6945	FAK 4541	2
S-6946	FAK 4542	3
S-6947	FAK 4544	1
S-5132	FAK 4547	1
S-6938	FAK 4548	1
S-6939	FAK 4549	1
S-6943	FAK 4550	2
S-6947	FAK 4551	1
S-6950	FAK 4553	2
S-6948	FAK 4555	3
S-6949	FAK 4558	3
S-6950	FAK 4559	2
S-6963	FAK 4560	3
S-6964	FAK 4564	4
S-6965	FAK 4566	4
S-8513	FAK 4567	6
S-8529	FAK 4568	4
S-11612	FAK 4569	6
S-8678	FAK 4570	4
S-6946	FAK 4571	3
S-6485	FAK 4572	4
S-6486	FAK 4573	4
S-9304	FAK 4582	4
S-8371	FAK 4583	5
S-A811	FAK 4601	4
S-D562	FAK 4610	5
S-5223	FAK 5444	3
S-4948	FAK 5445	3
S-4948	FAK 5446	3
S-4949	FAK 5447	3
S-4949	FAK 5448	3
S-5134	FAK 5451	4
S-5223	FAK 5452	3
S-4988	FAK 5453	4
S-A483	FAK 5455	5
S-A484	FAK 5456	5
S-18334	FAK 5457	5
S-4603	FDL 1034	11
S-A719	FDL 1214A	11
S-4382	FDL 908	11
S-4707	FDL 970A	11
S-A828	FDL 979A	11
S-5056	FTR 187L	7
S-5057	FTR 187R	7
S-8634	FTR 2069R	8
S-8635	FTR 2070L	8
S-6659	FTR 2090L	8
S-5988	FTR 2091R	8
S-5988	FTR 2202R	8
S-5620	FTR 2203RA	12
S-5988	FTR 2204R	8
S-B230	FTR 3030RA	9
S-B231	FTR 3031LA	9
S-6659	FTR 3033L	8
S-5988	FTR 3034R	8
S-5988	FTR 3302R	8
S-E395	FTR 3476	10
S-E394	FTR 3477	10
S-4768	FTR 373L	7
S-4767	FTR 373R	7
S-7459	FTR 4111L	7
S-7460	FTR 4111R	7

Replacement for International Truck

NEWSTAR Number	Replacement For	Page Nm
S-7358	FTR 423L	7
S-7357	FTR 423R	8
S-5048	FTR 431L	8
S-5049	FTR 431R	8
S-A764	FTR 8224	9
S-A765	FTR 8225	9
S-D639	FTR 8407	9
S-D640	FTR 8408	9
S-B599	FTR 8409	9
S-B600	FTR 8410	9

Replacement for Kenworth

S-18869	5295	12
S-18870	5296	12
S-19168	15002CSI	12
S-19138	B65-1007	12
S-19138	B65-1012	12

Replacement for Mack

S-5988	10-QH-248P5	8
S-6659	10-QH-248P6	8
S-5988	10-QH-311	8
S-6659	10-QH-312	8
S-7611	10-QK-157	16
S-7613	10-QK-229-A	16
S-8121	10-QK-365-A	16
S-8122	10-QK-370	16
S-5223	101KK109	3
S-5223	101KK110	3
S-5057	10QH242P1	7
S-5056	10QH243P2	7
S-5057	10QH248	7
S-5056	10QH248P2	7
S-5056	10QH248P2	7
S-5049	10QH248P3	8
S-5048	10QH248P4	8
S-5048	10QH310P1	8
S-5049	10QH39P1	8
S-A636	13-QK-246	16
S-13291	17-QF-460-P215	14
S-13292	17-QF-464-P180	14
S-13293	17-QF-464-P183	14
S-13289	17-QF-473-M	14
S-13287	17-QF-473-M2	14
S-13290	17-QF-473-M3	14
S-13288	17-QF-473-M4	14
S-5048	18-QK-28-A	8
S-5049	18QK214P2	8
S-5049	18QK23A	8
S-5049	18QK29301	8
S-8127	20-OL-1131	16
S-5616	21-AX-772	16
S-18334	220-KK-100	5
S-9122	3-AX-987	16
S-6946	301-SO-44	3
S-6072	301SQ47CP1	3
S-6073	301SQ52	4
S-5134	309KK102	4
S-4949	337KK100	3
S-4948	337KK101	3
S-4948	337KK104	3
S-4988	343KK103	4
S-7801	343KK105	2
S-B945	37QC34A	12
S-8610	44-QK-173-B	16
S-A637	8-QD-137	16

Replacement for PAI / Excel

S-5616	2246	16
S-9122	4680	16
S-8610	4682	16
S-A636	4752	16
S-8121	4811	16
S-7611	4890	16
S-8127	4903	16
S-8122	4910	16
S-A637	5191	16

INTERCHANGE INDEX

Replacement for Peterbilt

NEWSTAR Number	Replacement For	Page Nm
S-9432	02-01781	12
S-18801	02-02311-M001	12
S-18802	03-01654	12
S-18804	03-01656	12
S-10239	03-04059	14
S-18785	03-04327	14
S-18803	03-05117	12
S-18805	03-07296	12
S-18630	03AL1	12
S-18631	03AL2	12
S-E393	10-02498	11
S-17648	10-02499	11

Replacement for TRW

S-16393	DS1020	11
S-4603	DS1034	11
S-E393	DS1179	11
S-17648	DS1180	11
S-17354	DS1186	11
S-A719	DS1214	11
S-C618	DS1215	11
S-13415	DS1218	11
S-13715	DS1220	11
S-13716	DS1275	11
S-13717	DS1276	11
S-18039	DS1280	11
S-C367	DS1293	11
S-8292	DS800	11
S-4382	DS908	11
S-8154	DS918	11
S-4707	DS970	11
S-A828	DS979	11
S-5056	ES187L	7
S-5057	ES187R	7
S-8634	ES2069R	8
S-8635	ES2070L	8
S-7688	ES2077R	8
S-6659	ES2090L	8
S-5988	ES2091R	8
S-5049	ES2114R	8
S-5049	ES2115R	8
S-5048	ES2116L	8
S-5620	ES2203R	12
S-5988	ES2204R	8
S-8160	ES2212R	8
S-C014	ES2224L	9
S-C015	ES2225R	9
S-12090	ES235L	7
S-12091	ES235R	7
S-B230	ES3030R	9
S-B231	ES3031L	9
S-6659	ES3033L	8
S-5988	ES3034R	8
S-F505	ES3086L	9
S-F506	ES3087R	9
S-D898	ES3176R	9
S-D899	ES3177R	9
S-A764	ES3204L	9
S-A765	ES3205R	9
S-D639	ES3217L	9
S-D640	ES3218R	9
S-B599	ES3219L	9
S-B600	ES3220R	9
S-16147	ES323L	7
S-16146	ES323R	7
S-F250	ES3270L	9
S-F251	ES3271R	9
S-F248	ES3274L	10
S-F249	ES3275R	10
S-9000	ES3297R	10
S-8999	ES3298L	10
S-B945	ES3304R	12
S-F305	ES3442R	10
S-F306	ES3443L	10
S-E395	ES3476	10
S-E394	ES3477	10
S-4768	ES373L	7
S-4767	ES373R	7
S-8635	ES405L	8
S-8634	ES405R	8
S-7459	ES411L	7
S-7460	ES411R	7
S-7358	ES423L	7
S-7357	ES423R	8
S-5048	ES431L	8
S-5049	ES431R	8
S-18491	ES9137L	10
S-18490	ES9138R	10
S-17354	K162-587	11

Replacement for TRW

NEWSTAR Number	Replacement For	Page Nm
S-4996	K401N	1
S-5014	K431	1
S-5015	K432	1
S-6492	K477	1
S-7190	K479	1
S-6939	K489	1
S-6938	K496B	1
S-6944	K504	1
S-6947	K510B	1
S-5132	K517	1
S-6663	K524B	2
S-6943	K526B	2
S-6942	K526D	2
S-6950	K534B	2
S-7801	K535B	2
S-7463	K535D	2
S-6504	K538B	2
S-3682	K539D	2
S-9722	K540B	2
S-6946	K541B	3
S-6945	K542D	2
S-6503	K546B	2
S-6949	K547B	3
S-6502	K548B	3
S-5223	K549B	3
S-3596	K551B	3
S-4948	K552B	3
S-4949	K554B	3
S-6072	K562B	3
S-6948	K563B	3
S-14695	K564B	4
S-7191	K565B	3
S-6643	K567B	3
S-6963	K570B	3
S-5134	K571B	4
S-7801	K572B	2
S-6073	K574B	4
S-6964	K576C	4
S-8678	K582	4
S-6965	K583	4
S-6485	K584	4
S-8529	K585	4
S-6486	K586	4
S-9365	K591	4
S-F187	K591B	4
S-9304	K592	4
S-15614	K593	4
S-4988	K594	4
S-A811	K602	4
S-A483	K602C	5
S-13563	K603	5
S-A484	K603C	5
S-8371	K609	5
S-F091	K618C	5
S-F092	K619C	5
S-D819	K620C	5
S-18334	K627C	5
S-C464	K628	5
S-13976	K630C	6
S-E393	L24KT0026	11
S-18039	L24V48036A12	11

Replacement for Volvo

S-11651	3187322	14
S-4433	8397029	15
S-4435	8397031	15
S-4436	8397032	15
S-C635	8397033	15
S-7604	8397035	15
S-4505	8397076	15
S-4733	8397077	15
S-4734	8397078	15
S-4735	8397079	15
S-4736	8397080	15
S-5861	8397081	15
S-5862	8397082	15
S-4442	8397084	15
S-8420	8397088	15
S-4740	8397197	15
S-4737	8397200	15
S-4738	8397202	15

Replacement for White

NEWSTAR Number	Replacement For	Page Nm
S-C014	WH 027090962	9
S-C015	WH 027092963	9
S-7190	WH 216446	1
S-14695	WH 217175	4
S-7191	WH 37090-5005	3

INTERCHANGE INDEX - LISTED BY OUR NEWSTAR NUMBER

NEWSTAR Number	Page Nm	NEWSTAR Number	Page Nm	NEWSTAR Number	Page Nm
S-10239	14	S-17746	13	S-4433	15
S-11575	13	S-18039	11	S-4435	15
S-11612	6	S-18145	12	S-4436	15
S-11651	14	S-18237	15	S-4437	15
S-11652	14	S-18334	5	S-4442	15
S-11752	13	S-18356	12	S-4505	15
S-12090	7	S-18487	12	S-4523	13
S-12091	7	S-18489	12	S-4603	11
S-13287	14	S-18490	10	S-4707	11
S-13288	14	S-18630	12	S-4733	15
S-13289	14	S-18631	12	S-4734	15
S-13290	14	S-18693	12	S-4735	15
S-13291	14	S-18785	14	S-4736	15
S-13292	14	S-18801	12	S-4737	15
S-13293	14	S-18802	12	S-4738	15
S-13373	14	S-18803	12	S-4740	15
S-13415	11	S-18804	12	S-4767	7
S-13538	12	S-18805	12	S-4768	7
S-13563	5	S-18869	12	S-4882	13
S-13703	15	S-18870	12	S-4948	3
S-13715	11	S-18913	15	S-4949	3
S-13716	11	S-19168	12	S-4983	15
S-13717	11	S-19194	12	S-4988	4
S-13829	15	S-19195	12	S-4996	1
S-13973	5	S-19196	12	S-5014	1
S-13974	5	S-19197	12	S-5015	1
S-13975	6	S-19198	12	S-5017	13
S-13976	6	S-2121	13	S-5048	8
S-13979	6	S-2357	13	S-5049	8
S-13980	6	S-2409	13	S-5056	7
S-13981	6	S-2595	13	S-5057	7
S-13982	6	S-2634	13	S-5070	15
S-13983	6	S-2680	13	S-5087	13
S-14109	15	S-2729	13	S-5088	13
S-14653	14	S-2731	13	S-5102	13
S-14680	5	S-2888	13	S-5132	1
S-14695	4	S-3072	15	S-5134	4
S-14718	15	S-3137	13	S-5223	3
S-15182	13	S-3199	13	S-5247	13
S-15348	16	S-3596	3	S-5601	13
S-15468	16	S-3598	13	S-5616	16
S-15614	4	S-3682	2	S-5620	12
S-16146	7	S-3777	13	S-5779	13
S-16147	7	S-3778	13	S-5861	15
S-16393	11	S-3790	13	S-5862	15
S-17354	11	S-3938	13	S-5988	8
S-17617	6	S-3959	13	S-6072	3
S-17648	11	S-4382	11	S-6073	4

INTERCHANGE INDEX - LISTED BY OUR NEWSTAR NUMBER

NEWSTAR Number	Page Nm	NEWSTAR Number	Page Nm	NEWSTAR Number	Page Nm
S-6485	4	S-8513	6	S-D639	9
S-6486	4	S-8527	14	S-D640	9
S-6487	14	S-8528	14	S-D819	5
S-6492	1	S-8529	4	S-D892	13
S-6502	3	S-8610	16	S-D898	9
S-6503	2	S-8634	8	S-D899	9
S-6504	2	S-8635	8	S-D905	13
S-6643	3	S-8678	4	S-E393	11
S-6659	8	S-8732	13	S-E394	10
S-6663	2	S-8733	13	S-E395	10
S-6938	1	S-8999	10	S-E913	14
S-6939	1	S-9000	10	S-E914	14
S-6942	2	S-9122	16	S-F091	5
S-6943	2	S-9304	4	S-F092	5
S-6944	1	S-9365	4	S-F187	4
S-6945	2	S-9432	12	S-F248	10
S-6946	3	S-9433	12	S-F249	10
S-6947	1	S-9488	10	S-F250	9
S-6948	3	S-9489	10	S-F251	9
S-6949	3	S-9722	2	S-F305	10
S-6950	2	S-A414	15	S-F306	10
S-6963	3	S-A483	5	S-F505	9
S-6964	4	S-A484	5	S-F506	9
S-6965	4	S-A636	16		
S-7190	1	S-A637	16		
S-7191	3	S-A719	11		
S-7357	8	S-A764	9		
S-7358	7	S-A765	9		
S-7459	7	S-A766	12		
S-7460	7	S-A811	4		
S-7463	2	S-A828	11		
S-7579	13	S-A829	13		
S-7580	13	S-B003	12		
S-7604	15	S-B023	15		
S-7611	16	S-B230	9		
S-7613	16	S-B231	9		
S-7621	15	S-B599	9		
S-7622	15	S-B600	9		
S-7688	8	S-B945	12		
S-7801	2	S-C014	9		
S-8121	16	S-C015	9		
S-8122	16	S-C119	5		
S-8127	16	S-C302	13		
S-8154	11	S-C367	11		
S-8160	8	S-C464	5		
S-8292	11	S-C618	11		
S-8371	5	S-C635	15		
S-8420	15	S-D562	5		

NEWSTAR™ ADDITIONAL CATALOGS AND INFORMATION



COMPLETE BINDERS AVAILABLE BY REQUEST



COMPLETE LINE ON FLASH DRIVE AVAILABLE BY REQUEST

VIEW ONLINE CATALOGS AT : WWW.SANDSTRUCK.COM

OR CONTACT US TO RECEIVE OUR CATALOGS IN THE FOLLOWING FORMATS: PRINTED CATALOG CD-ROM



POWER STEERING CHASSIS AIR & HYDRAULIC FREIGHTLINER TRUCK HOODS & GRILLES



MILITARY TRUCK INTERNATIONAL TRUCK DRIVELINE PTO & HYDRAULIC HVAC



DRIVE TRAIN STARTERS & ALTERNATORS WATER PUMPS SEVERE DUTY V-BELTS



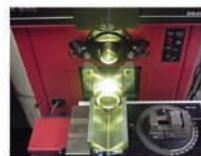
OUR D2 GOVERNOR DISPLAY

OUR DRIVELINE DISPLAY

FOR OVER HALF A CENTURY S & S TRUCK PARTS, INC., THE PARENT COMPANY OF NEWSTAR HAS SUPPLIED REPLACEMENT COMPONENTS FOR MEDIUM AND HEAVY DUTY TRUCKS. WE ARE KNOWN FOR PROVIDING QUALITY PARTS THAT ARE COMPETITIVELY PRICED AND SUPPORTING OUR CUSTOMERS WITH AN EXTREMELY KNOWLEDGEABLE STAFF THAT IS BOTH FRIENDLY AND SERVICE-ORIENTED. AS WE PASS THE DECADE MARK AT OUR CORPORATE FACILITY IN SCHAUMBURG, ILLINOIS, WE STRIVE TO STRENGTHEN OUR SHIPPING LOGISTICS WITH STATE-OF-THE-ART PACKAGING AND MATERIAL HANDLING EQUIPMENT. ADD TO THE EQUATION OUR UNSURPASSED QUALITY CONTROL LABORATORY, OUR ADDITIONAL BRANCH LOCATIONS IN RALEIGH, NC AND ONTARIO, CA, AND OUR 97% ORDER FILL RATE, YOU CAN RELY ON S & S TO PROVIDE THE SERVICE AND PERFORMANCE YOU ARE ENTITLED TO.

QUALITY CONTROL

OUR COMMITMENT TO QUALITY EXTENDS FROM OUR MANUFACTURING PROCESS TO OUR QUALITY CONTROL LABORATORY (QCL). THE QCL LOCATED AT OUR CORPORATE HEADQUARTERS IN SCHAUMBURG, ILLINOIS CONTAINS THE MOST ADVANCED AND SOPHISTICATED QUALITY INSPECTION EQUIPMENT TO ENSURE THAT NEWSTAR COMPONENTS MEET THE INDUSTRY'S MOST STRINGENT QUALITY STANDARDS.



CNC OPTICAL COMPARATOR



CNC GEAR CHECKER



COORDINATE MEASURING MACHINE (CMM)



CUSTOM ENGINEERED FIXTURES



MITUTOYO HR-500 ROCKWELL HARDNESS TESTER



GLEASON UNIVERSAL GEAR TESTER



DUMP PUMP TESTER



S & S WARRANTY

All Chassis Components covered in this catalog are warranted for one (1) year / 100,000 miles from installation, or 18 months after purchase from S & S Truck Parts, Inc., whichever comes first. We warrant all new parts against defective material or workmanship when such parts are used in appropriate applications. We will NOT extend this warranty to parts where failure or damage was caused by misapplication, accident, or abuse.

Unless otherwise stated, authorization from your salesperson is required to initiate any return for warranty. If our examination shows the parts to be defective, we will replace such parts free of charge. This warranty extends solely to replacement of defective parts; we disclaim liability for labor and/or special or consequential damages of any nature.

If it is necessary to return any parts under this warranty, the buyer agrees to wait for settlement of his claim before any deductions are made in payments to S & S. Any expenses incurred without the consent of S & S will be disallowed.



Genuine
NEWSTAR™

2011 CHASSIS CATALOG

Established in 1954, S&S Truck Parts, Inc. is one of the largest independent suppliers of replacement truck parts in the world.

Traditionally known as a drive train gear specialist, S&S has aggressively expanded its product range with the **NEWSTAR** brand.

Under the **NEWSTAR** brand, S&S supplies many of the fastest-moving parts and components in categories including Powertrain, Transmission, Differential, Chassis, Drive Line, Hydraulic, PTO, Power Steering, Air Brake Parts and “captive” vehicle components.

Look for our full line of new product catalogs online at sandstruck.com/catalogs and at your authorized distributor.

Corporate Headquarters, Schaumburg, Illinois



UNITED STATES

Corporate Headquarters

600 W. Irving Park Road Schaumburg, Illinois 60193

Order Desk: 847-584-2000 | Toll Free: 800-621-1553

Fax: 847-584-3000 | Toll Free Fax: 800-621-1558

Mexico Toll Free: 001-800-727-8373

5320 Departure Drive Raleigh, NC 27616

Toll Free: 800-334-7058 | Local Fax : 919-872-2836

5350 Ontario Mills Pkwy, Suite 200 Ontario, CA 91764

Toll Free: 888-621-1553 | Local Fax : 909-481-8555

CANADA

6460 Kestrel Road Mississauga, Ontario L5T 1Z7

Local Phone: 905-564-7100 | Toll Free: 800-363-4148

Local Fax: 905-564-3485

19272 - 96th Ave. Unit #15 Surrey, British Columbia V4N 4C1

Local Phone: 604-882-2577 | Toll Free: 800-665-4327

Local Fax: 604-882-3898

176 Creditstone Road, Unit 10 Concord, Ontario L4K 4H7

Local Phone: 905-761-1399 | Toll Free: 800-363-4148

Local Fax: 905-761-0698

5318 Finch Ave. East Unit #1-4 Scarborough, Ontario M1S 5G2

Local Phone : 416-412-7555

Local Fax : 416-412-7580

sandstruck.com | 800-621-1553 | info@sandstruck.com

NEWSTAR is a trademark of S&S Truck Parts, Inc.

